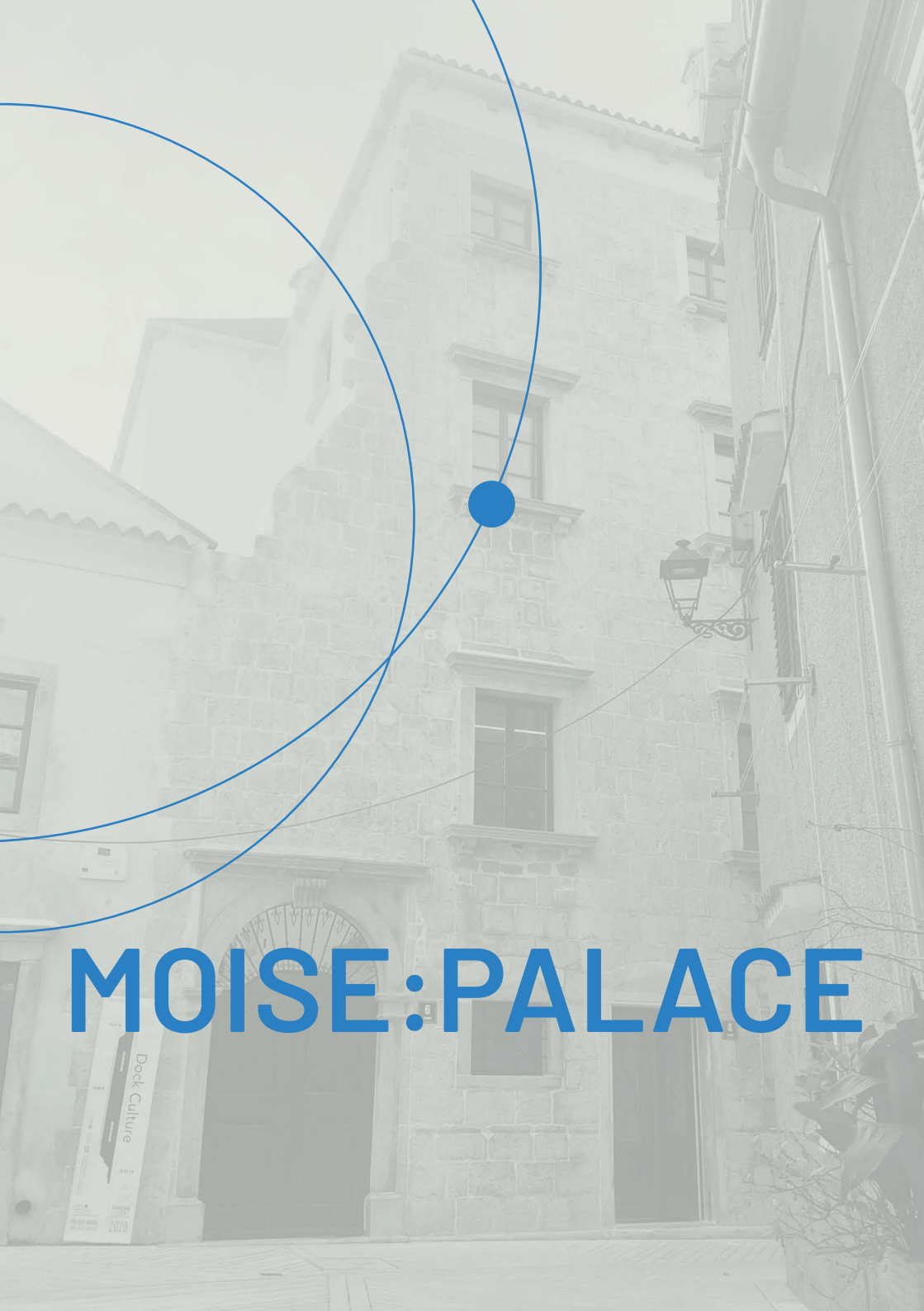


MOISE: PALACE

Dock Culture
2020



MOISE: PALACE

Dock Culture
2020

Political, economic and ecological systems, institutions and norms need to be redesigned for a meaningful transformation that is not only research-based but also inherently democratic and participative. The insular isolation of MOISE offers a unique forum space for intellectual shift and collective creation that enable groundbreaking ideas and actual change. MOISE aims to evolve into one of the most inspiring spaces to provoke dialogue and future-shaping thought in Europe.

A North Adriatic cultural monument of considerable historical, artistic and symbolic importance, the 500-year-old MOISE palace is located in the old town centre of the City of Cres.



MOISE is a p(a)lace of transformative encounters stimulating communities for archipelagic thinking.

At MOISE, critical thinking generates an engaged intellectual community that Southeast Europe is sorely in need of. Transcending the traditional regional identities and reconciliation narratives, new contemporary concepts must invent the vision of a joint future ranging from the Mediterranean to the Central European perspective. At MOISE, these novums converge in cutting-edge events such as the European Forum Moise or the Regional School of Democracy, aimed at intellectuals, active citizens, decision-makers and responsible business.

Consequent to principles of diversity, equity and inclusion, MOISE creates new proximity to reinvent Europeanness and co-design better societies. Research-based social innovation is driven by a radical holistic approach where analytic thinking encounters the arts. Having experienced MOISE, participants return to their communities as change-makers empowered to act across realms and borders as agents of Democracy and Solidarity.

Gathering both international academic and local communities, MOISE is an open place of encounter that brings revitalization, restoration and resilience.

FLAGSHIPS:

- **Shared Kitchen MOISE** is an exquisite space blending food culture, sensations, flavours and the imaginaries of taste. Deeply integrated into the local cultural heritage of the Mediterranean and the island, a setting for gastronomic experience is created that cultivates ties and embraces diversities of people and cultures.
- **European Forum Moise** is powered by the Erste Foundation, a premier annual event drawing on the heritage of the Korčula school of former Yugoslavia. It brings together leading global thinkers and regional practitioners to confront and discomfort them while searching for the answers to the pressing social issues in the region and across Europe.
- **MOISE Fellowship Programme** draws on and expands the successful fellowship initiative of CAS SEE. It gathers a pool of rigorously selected young scholars and senior fellows working towards impacting and advancing public discourses on democracy and socially relevant topics in the region and worldwide.

A forum for investigation, exploration and discovery, MOISE offers a **pristine retreat** for cutting edge academic research, communication and progressive pedagogy.



Led by a hi-profile international interdisciplinary team, MOISE is hosted by the University of Rijeka and embedded into a rich international partner network involving important regional players from academic, policy and donor communities. It can rely on its own revenues by offering a perfect setting for seminars, conferences, lifelong learning and non-institutional education, and partners' complementary programs and activities.

The Palace Core Program represents a balanced blend of both academic and community activities

RESEARCH & EDUCATION

- Fellowship residencies
- Research program (courses, conferences, workshops)
- European Forum Moise
- Regional School of Democracy
- Study Programmes, student cooperation and mobility
- Residencies and artistic projects
- Partner Events (seminars, conferences)



COMMUNITY

- Shared Kitchen
- Creative Communities
 - Youth education
 - Community events
 - Cultural production & Creative incubation
 - Life-long learning
 - Vulnerable communities
- Mediatheque



MOISE builds **new models for embedding communities** of solidarity and deep engagement within local and global networks in a radically open, inclusive and mindful way.

Devising **strategies** and **experimenting** with practices for social, economic and political **change**, MOISE is a laboratory for **transformative thinking** of considerable impact.

The Partnership program activities are based on MOISE's rich associate partners network that, next to the activities of the International academic consortium and the University of Rijeka consortium (Western Balkans Rector's Forum), also covers Residencies with external partners, an Artist residency programme and a strand of Open partnerships.

Through a diverse and internationally profiled program, already in its piloting stage, MOISE has developed a stable bond with the local community, reflected in dozens of events and hundreds of visitors. Deeply integrating the local cultural heritage, Moise will stir senses and tastes of the sea and the island with an innovative educational space devoted to the research and development of theory and practice of our futures. MOISE engages the local population across age groups in new kinds and topics of learning and cultural exploration, from maritime to agricultural heritage and from the community's intricate arts practices to its manifold richness in crafts. The community outreach of MOISE will concentrically expand beyond the town of Cres onto the Cres-Lošinj area, the wider archipelago, in particular toward the micro-region of Kvarner and especially the Rijeka conurbation area.

University of Rijeka
Center for Advance Studies Southeast Europe
Radmile Matejčić 2, 51000 Rijeka
Moise Palace, Zagrad 6, 51557 Cres
contact: cas@cas.uniri.hr

Executive Director Sanja Bojanić
sanja.bojanic@uniri.hr,
tel: (+385) 91 4976634

UNIVERSITY OF RIJEKA

uniri



The Moise house is the largest residential building of Renaissance Cres and, through its size, it can be compared to prominent examples of large palaces in Dalmatian towns. A registered Heritage site, this unique building is located in the northern Adriatic, on the island of Cres, well-known for its temperate climate.

THE MOISE PALACE - AN EDUCATION CENTRE OF THE UNIVERSITY OF RIJEKA

The new academic centre is grounded in and sustained by an international network of partner universities, providing high standards of scientific research and offering a beautiful and singular venue for critical thinking and innovation. It strives to strengthen European, transnational and regional scientific cooperation.

ARTS, NEW TECHNOLOGIES, HUMANITIES, SOCIAL SCIENCES

A venue and forum for various scientific and research activities, it welcomes visiting academics, students, artists, and teams of experts and practitioners wishing to withdraw to a serene and inspiring working setting. The Moise Palace is a study haven for those who intend to conduct scientific work while exploring and enjoying the island's pristine nature and local cuisine. It is a place to restore individual and group wellness and advance new investigative practices.

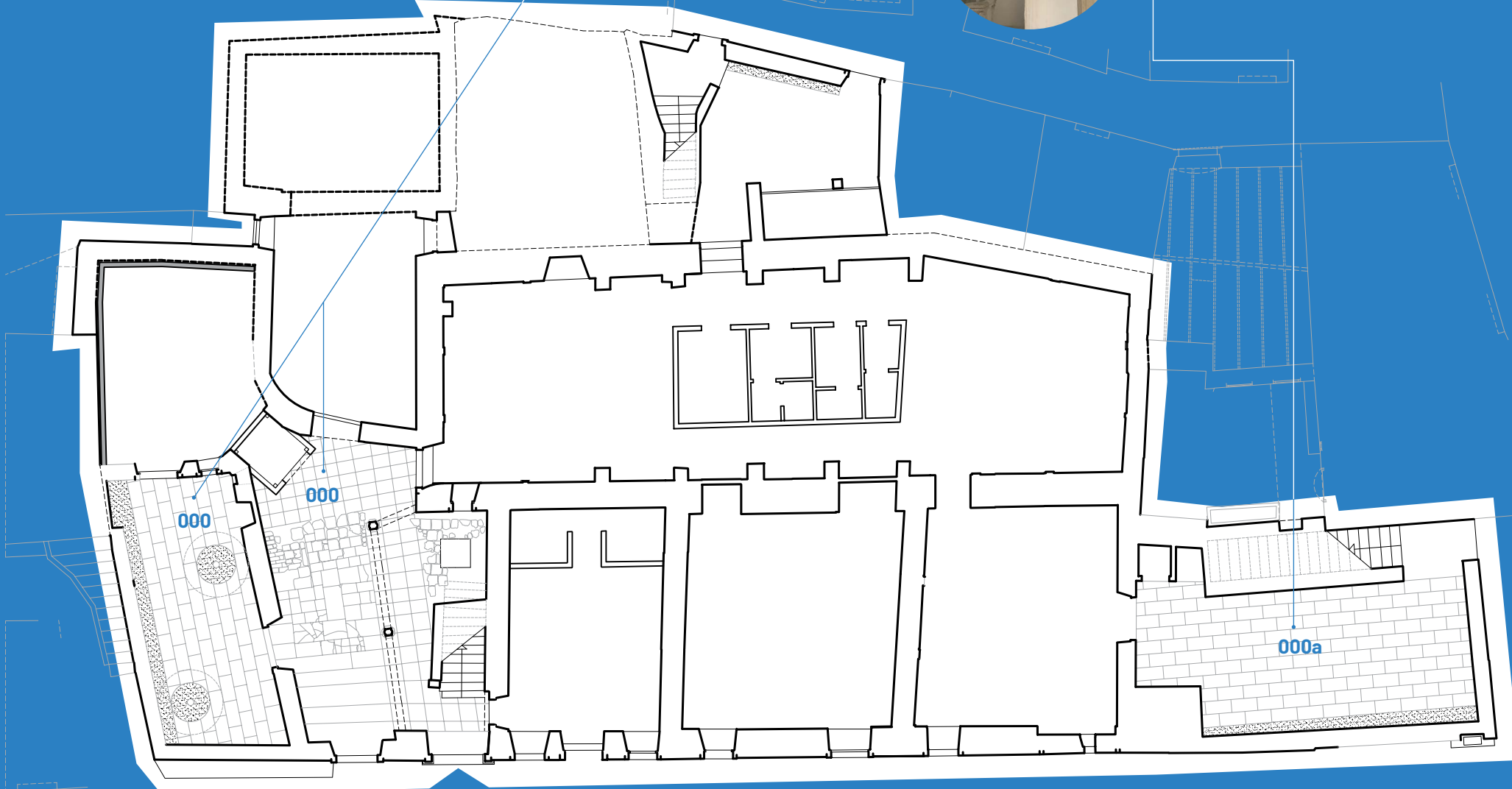
SOCIAL RESPONSIBILITY & COMMUNITY DEVELOPMENT

The University of Rijeka considers the development of the Moise Palace Centre an excellent opportunity to further its social responsibility mission and contribute to the community of Cres.

WORKING AND PUBLIC AREA

GROUND FLOOR

- 000 1 atrium (ground floor)
- 000a 3 terraces (1 on the ground floor, 1 on the 1st floor, 1 on the 2nd floor)



main entrance

WORKING AND PUBLIC AREA

1ST FLOOR

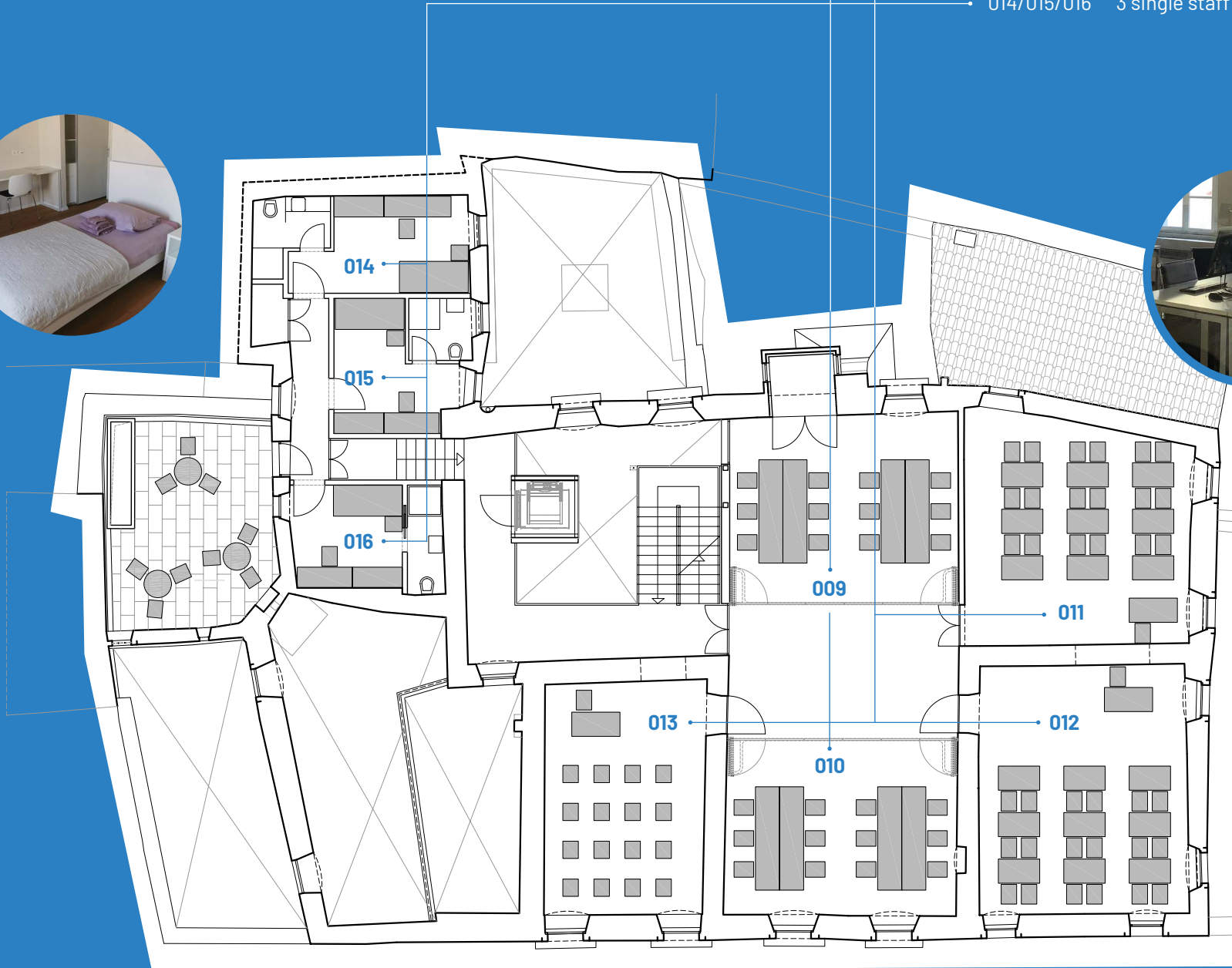
- 002 reception
- 002a bar and dining area for 10-20 persons
- 003 office and meeting room
- 004/004a conference room up to 100 persons
- 005 library and working space
- 007 internetworking area
- 008 5 bathrooms



WORKING AND PUBLIC AREA

2ND FLOOR

- 009/010 modular working space for 20-30 participants
- 011/012/013 3 classrooms for 12-15 participants
- 014/015/016 3 single staff rooms

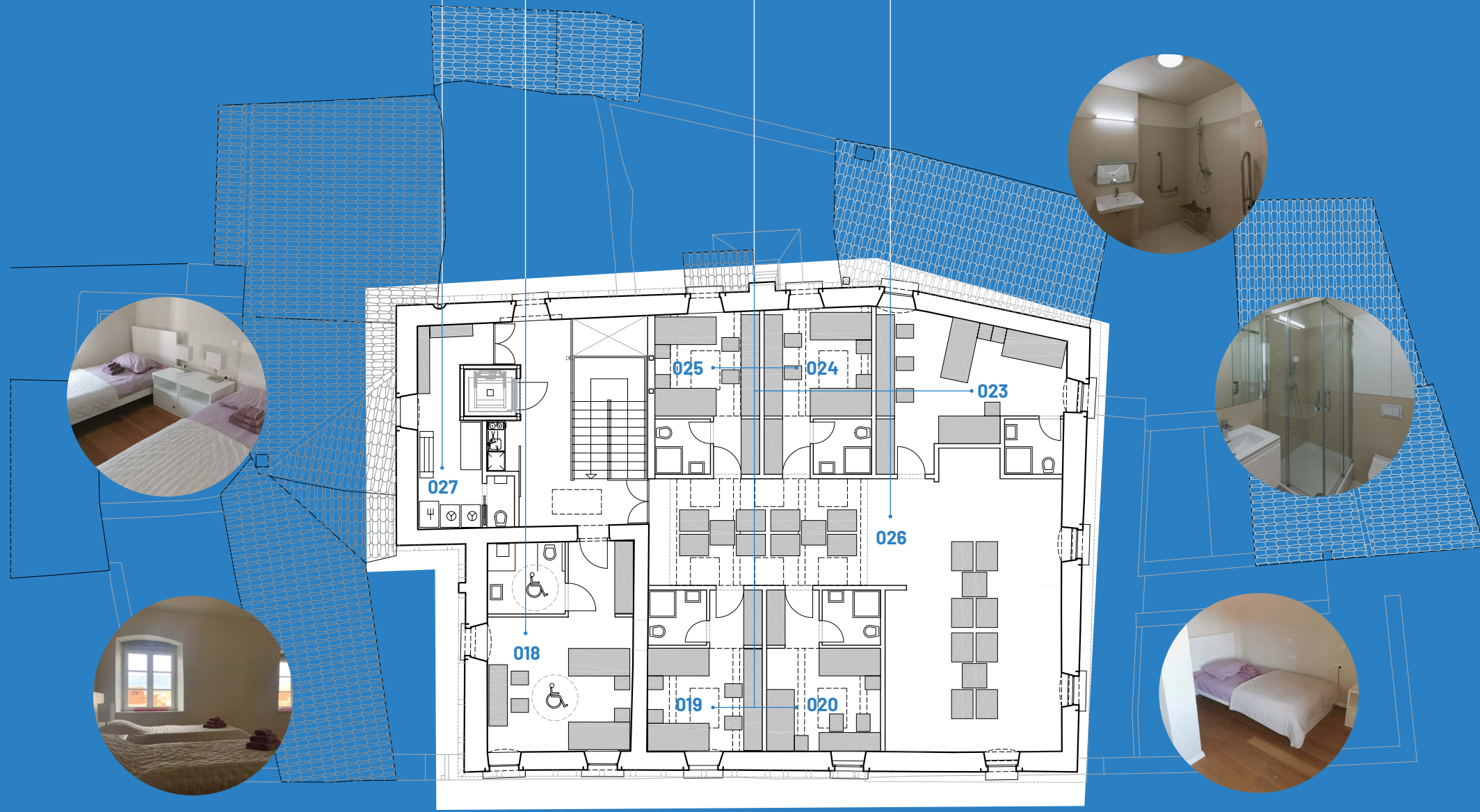


RESIDENTIAL AREA

ALL ON THE 3RD FLOOR

- 018
- 019/020/023/024/025
- 026
- 027

1 room with 2 single beds for persons in a wheelchair
5 rooms with 2 single beds
leisure and working area
kitchenette/laundry



Head of the Programme Activities

Andreja Malovoz

(+385) 95 5298717

andreja.malovoz@uniri.hr

Program Associate

Tina Perić

(+385) 95 5176019

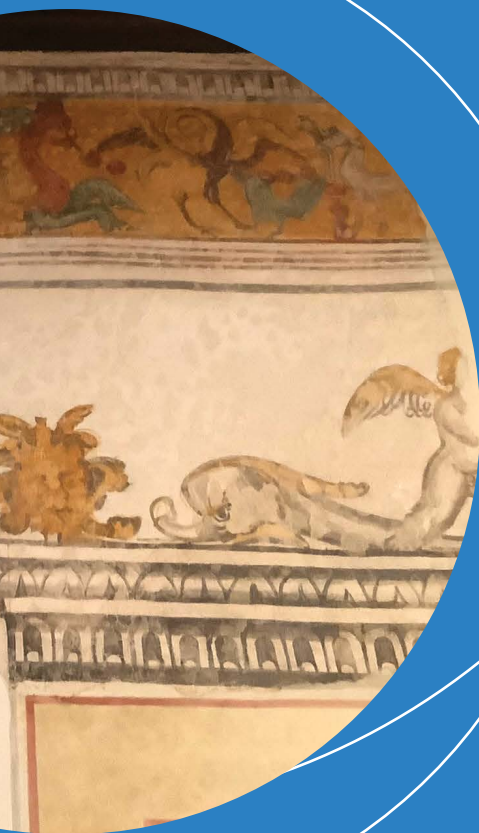
tina.peric@uniri.hr

Technical Assistance

Aleksandar Živanović

(+385) 98 9616845





University of Rijeka
Center for Advance Studies Southeast Europe
Radmile Matejčić 2, 51000 Rijeka
Moise Palace, Zagrad 6, 51557 Cres
contact: cas@cas.uniri.hr