

Genomic Variability of Premature Infants: From Sequencing to Functional Studies

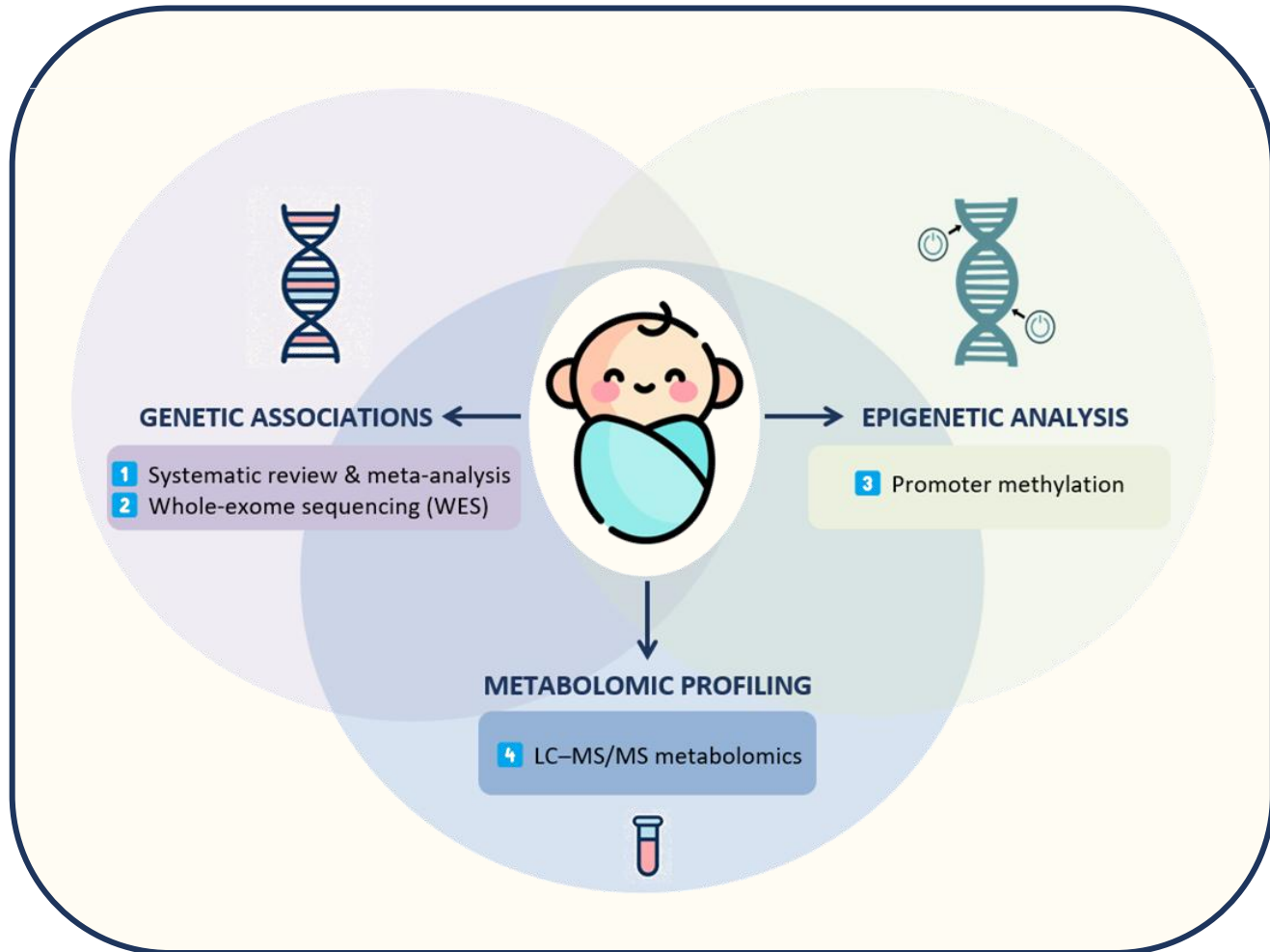


Preterm birth is a multifactorial condition involving genetic, epigenetic and metabolic mechanisms



Integration of multi-omics model of preterm birth:

- Identification of functional genomic variants
- Discovery of metabolic biomarkers



IMPROVED UNDERSTANDING AND PREDICTION OF PRETERM BIRTH